

# Tatler Homes



## GROUNDLED LIVING

Design that embraces life's joys



APRIL 2024 RM2500



9 771985 4740007

3 9938 17 90200038236

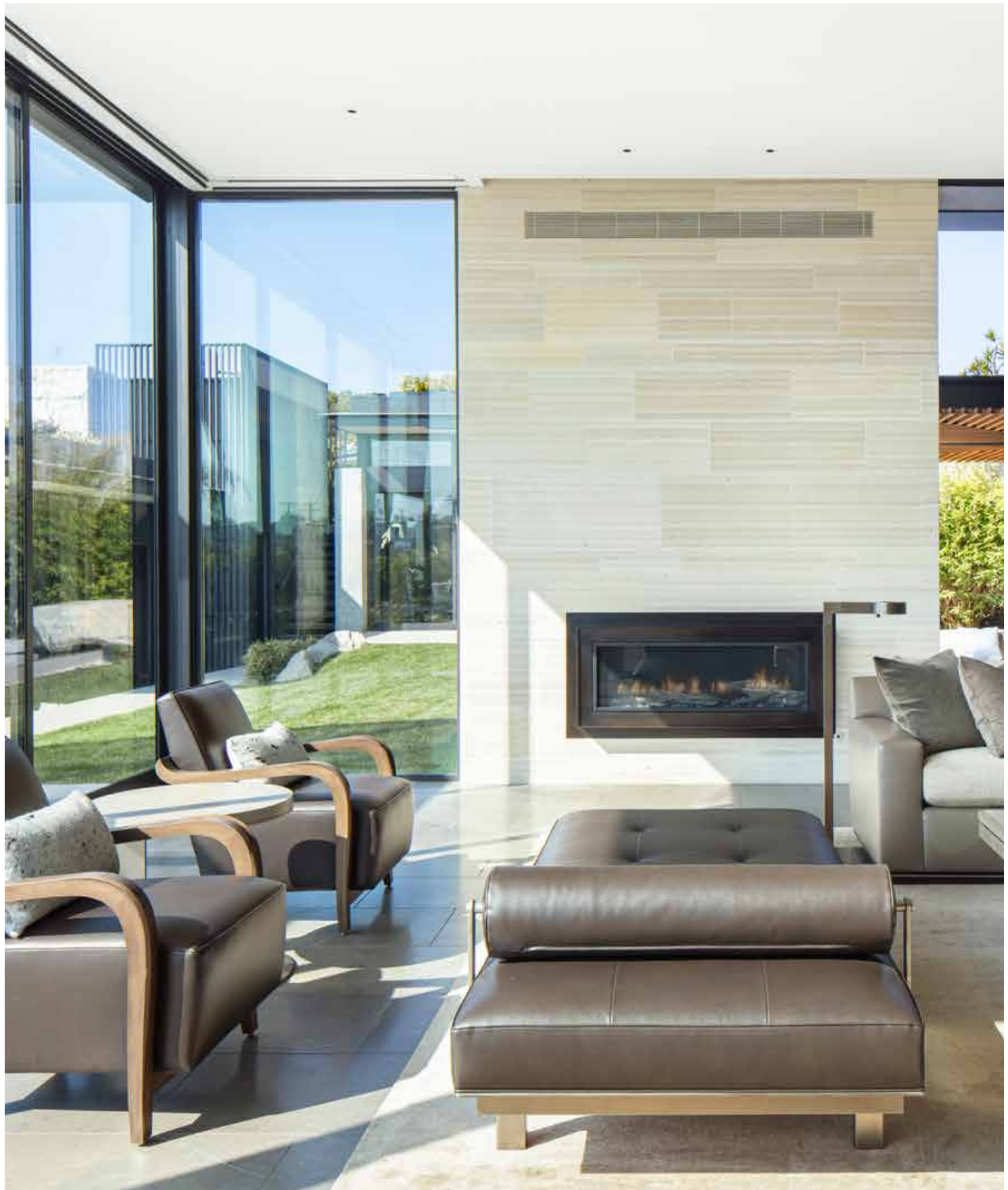


# CALIFORNIA DREAMIN'

The contemporary residence boasts coastal opulence across its multiple attached properties

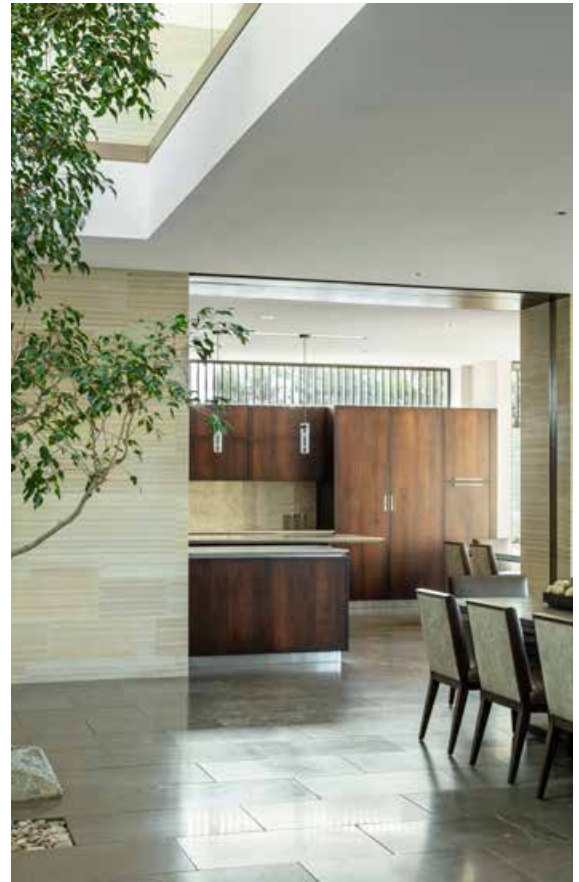
*By Celeste Goh. Photography by Manolo Langis*





**Left to right:** Fully custom and customised furnishings dominate the living area; an en route pathway to the kitchen from the biophilic foyer

**Previous spread:** A series of interconnected spaces anchored by a sprawling pool



**A**top the elevated Hill Section of Manhattan Beach, California, one of the three Beach Cities within the South Bay region of Los Angeles County, this warm contemporary build by KAA Design Group is nestled amidst its distinct neighbourhood of sprawling home residences and pied-à-terre, gazing out towards the pristine panorama of the Pacific in the distance.

The Los Angeles-based firm with integrated architecture and landscape architecture expertise is no stranger to the Californian lifestyle, and the award-winning firm has dedicated 35 years imbuing such West Coast affluence through the many contemporary residential designs peppered across the populous coastal city.

“We actually designed a home on the property several decades ago, and the new owner wanted us to continue the vision with an additional attached property,” recalls Grant Kirkpatrick, founding partner of KAA Design Group.

He continues: “The client had requested a soothing, zen-like setting, and the team obliged with a property that used architecture, nature and materials as a way to transform your mindset as you come from a busier, more frenetic place to a place of calm and repose.”



## CLUSTERED ENCLAVE

Surrounded by dense gardens with extensive plantings that buffer the residence from neighbours, there's a transformation through the gate entry and passage up the walled auto court, leading towards an oasis of calm that unfolds past the bridge over the water.

Less as a series of rooms, but rather a series of interconnected spaces, satellites to the main house are the pool house and the guest house that doubles as a studio and office space atop the garage. The attached properties are anchored by a sprawling pool and koi pond in the heart of the heavily landscaped 12,000 sq ft site.

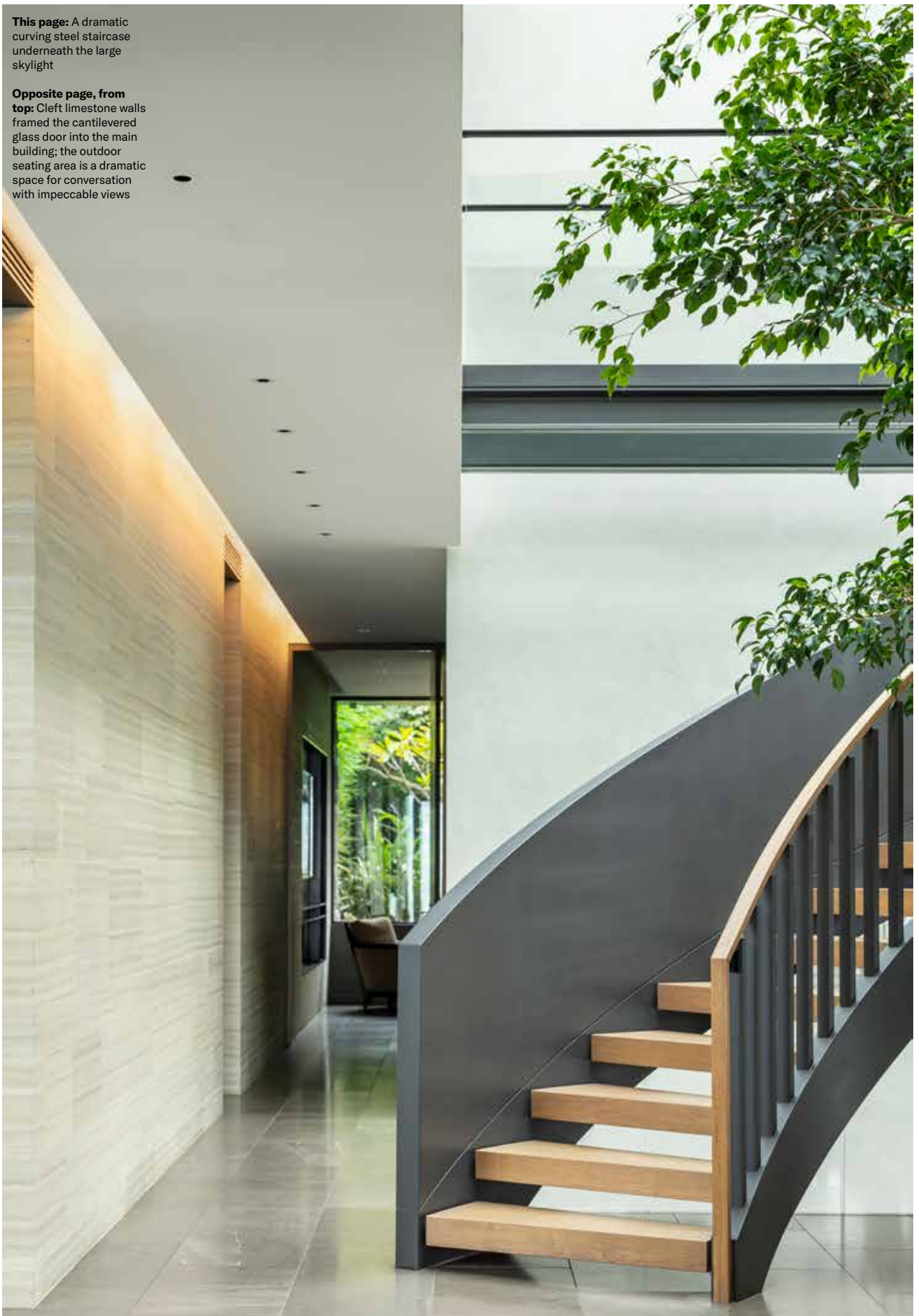
## EBB AND FLOW

The green wall adjacent to the front door leads the seamless continuity of the compound into the main building, the first indication of a spatial blurring between the outside and the inside.



**This page:** A dramatic curving steel staircase underneath the large skylight

**Opposite page, from top:** Cleft limestone walls framed the cantilevered glass door into the main building; the outdoor seating area is a dramatic space for conversation with impeccable views





**This page, from top:** Custom dining table made of cerused oak in the open-plan dining area; abstract expressionist art pieces dotted the interior walls



**Opposite page, from top:** The dense gardens with extensive plantings buffer the residence from neighbours; the clear glass walkway links the private spaces on the upper floor



Past the cantilevered glass door, the biophilic foyer greets all underneath a large, 16-foot-by-18-foot skylight, bringing in ample daylight to highlight the dramatic curving steel staircase that connects the three levels of the home with eight bedrooms and nine baths.

Overhead, a clear glass walkway links the private spaces, consisting of the master bedroom with its distant ocean views, kids' bedrooms, office and study room. Whereas downstairs, the kids' playroom shares the social space area with the parents' bar, which features a backlit onyx wall with the owners' collection of antique African masks on display.

The foyer opens out onto the open-plan dining and living areas, a low, double-sided custom console dividing the areas; as well as an en route pathway to the kitchen.

The ceiling-height pocket doors in the living area that drives the persisting flow outdoors once again, where a sitting area—an extension of the interior living room—is set partially below the waterline of the koi pond, creating a dramatic space for conversation.



## MATERIAL WORLD

“Only one—nature,” says Kirkpatrick, when asked about the source of inspiration for the residence located along 1st Street. “The material and colour palette for the home is decidedly neutral in order to emphasise the verdant gardens—from the green wall to the tree inside. Everything was an effort to intertwine nature both around and inside the home.”

Warm limestone holds the property on rock-steady ground, expressed in cleft form on the exterior before transitioning into smoother, honed finishes inside. Counterpointing the stone aesthetic is a plethora of rich materials, such as steel and wood

In the dining area, a custom table made of cerused oak is nickelled with an acid-etched aluminium centrepiece, an industrial interpretation of shagreen. While the similar wood choice framed the large, pocket doors in the living area, playing off the warmth in the adjoining kitchen, where Brazilian quartzite counters and backsplash accented the dark-stained cabinets.

Lastly, fully custom and customised furnishings dominate the interiors, alongside walls dotted with abstract expressionist art pieces by the likes of Richard Diebenkorn and Robert Motherwell.

“Bespoke pieces including a custom daybed, side tables and coffee table define the space,” elaborates Kirkpatrick. “Moreover, comfort was assured through extensive sit testing and material explorations.”